

RETURNING TO THE WORKPLACE SAFELY

6 Coronavirus-Era Posters to Support a Safe Workplace

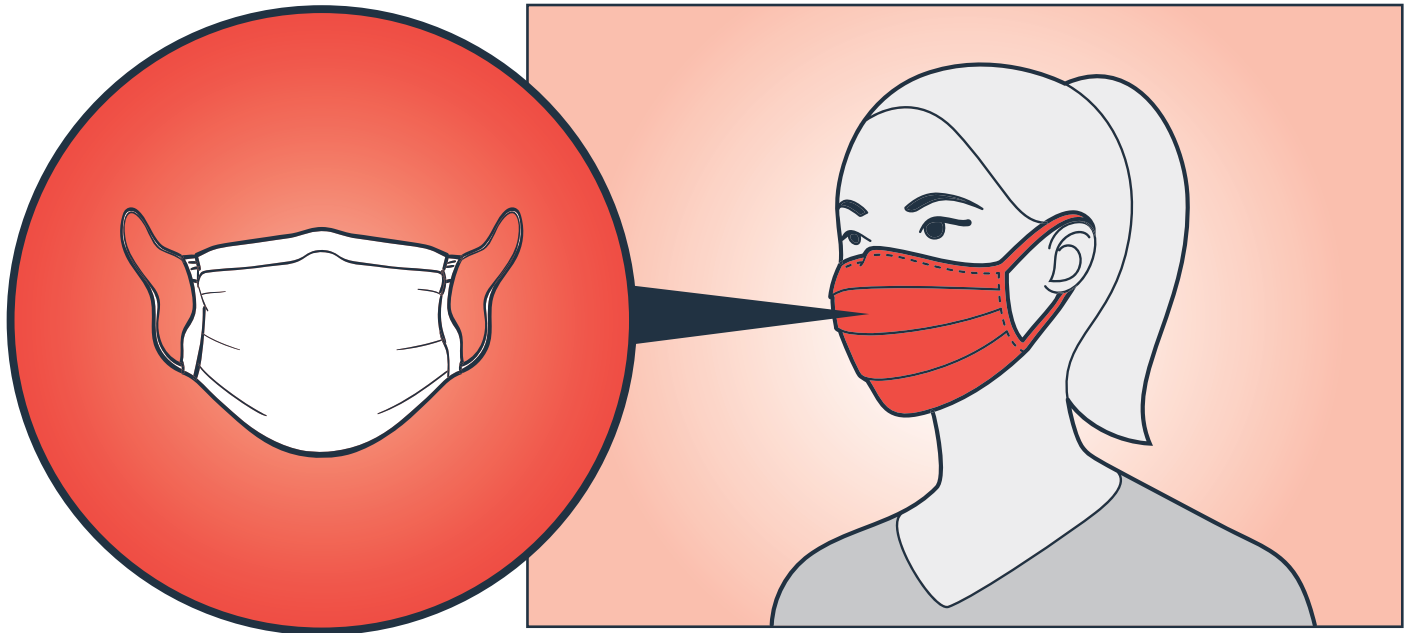
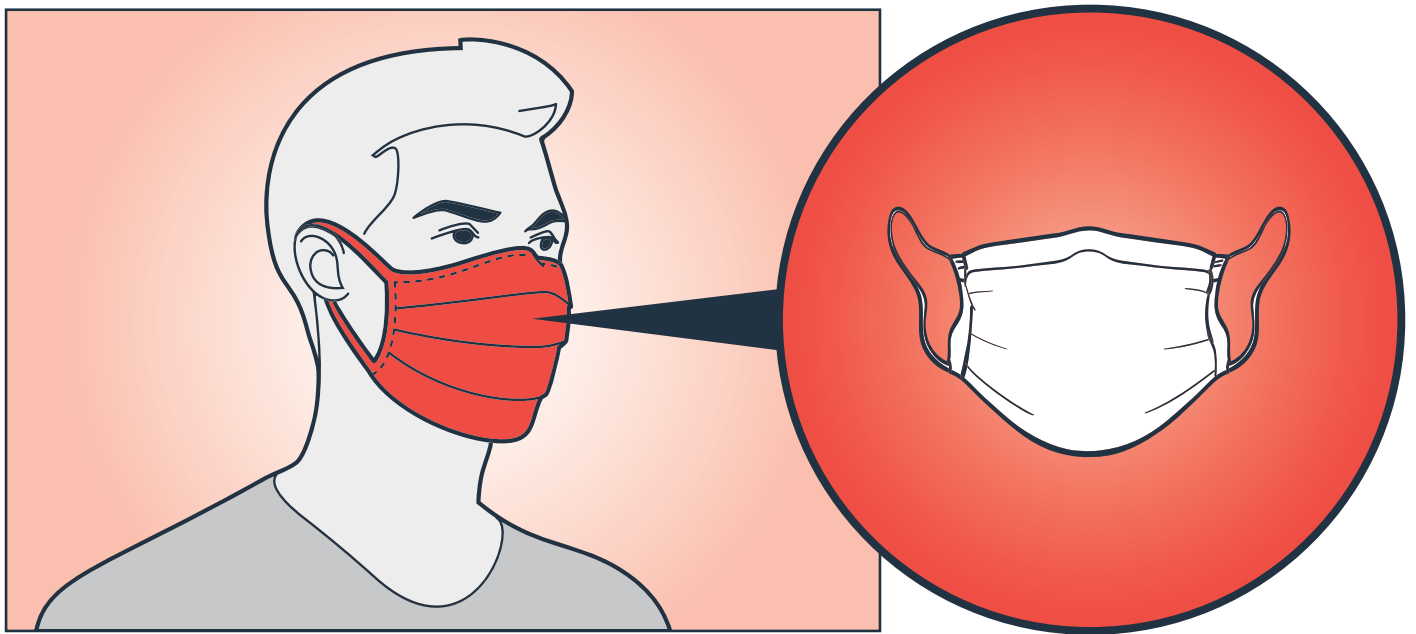
July 2020



You have not paid Marsh any compensation for receipt of the Posters. The Posters are not intended to be usable for any individual situation and should not be relied upon as such. Marsh makes no representation that the Posters accurately reflect your organization's policies or practices, comply with any governmental or health authority requirements or are otherwise suitable to your specific organization. Marsh does not offer, and is not offering, any medical or legal advice. Accordingly, any statements made by Marsh in the Posters are not to be relied upon as medical or legal advice. Please consult your own professional advisors on these and other issues, as you deem appropriate. Marsh assumes no obligation to revise the Posters to reflect any changes, events or conditions that may occur subsequent to your download or to otherwise update the Posters.

By downloading the Posters, you agree to the foregoing and to hold Marsh and its affiliates harmless from all liability to you, your employees or any other party arising out of or in connection with the Posters or any matter contained therein, its delivery to you or your use thereof. This agreement represents the entire agreement between you and Marsh and supersedes all prior agreements, either written or oral, relating to the Posters.

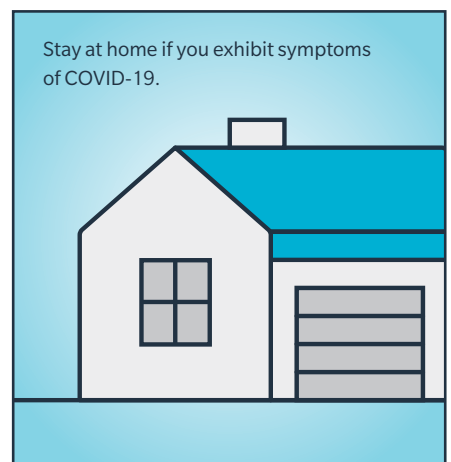
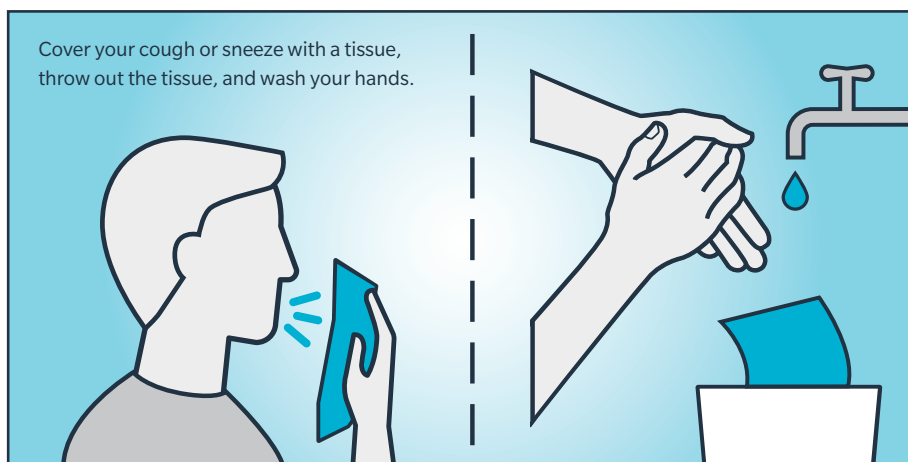
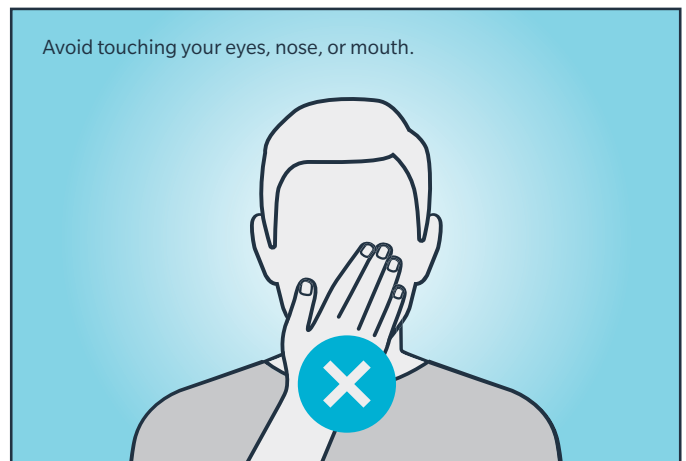
Mask Zone



Ways We're Working to Keep Our Community Safe



Things You Can Do to Help Keep Our Community Safe

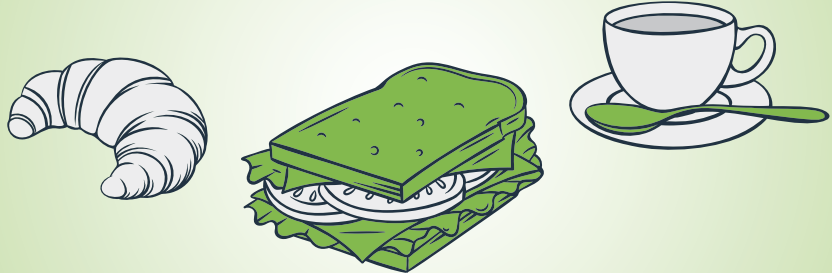


The Kitchen

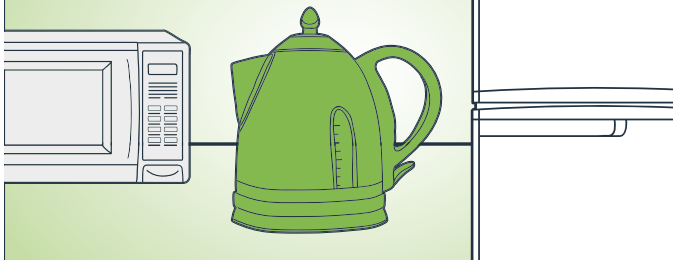
Wear a mask over your nose and mouth.



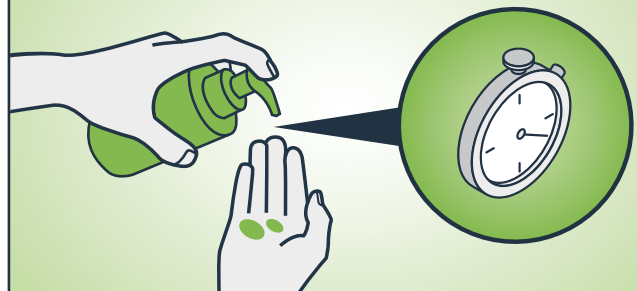
Limit eating and drinking to your personal work space.



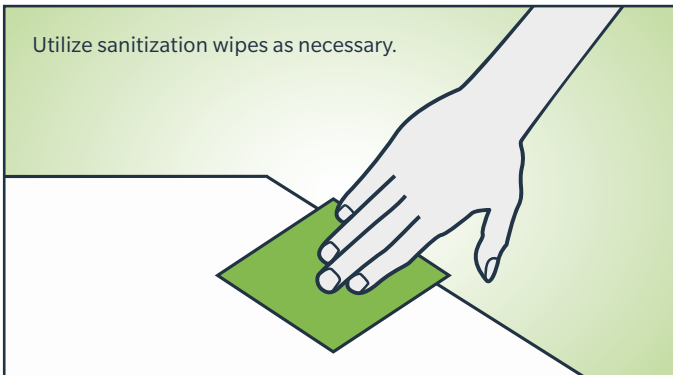
Avoid touching shared equipment by using a paper towel, your elbow, or clean gloves.



Wash your hands for at least 20 seconds before and after using communal items.



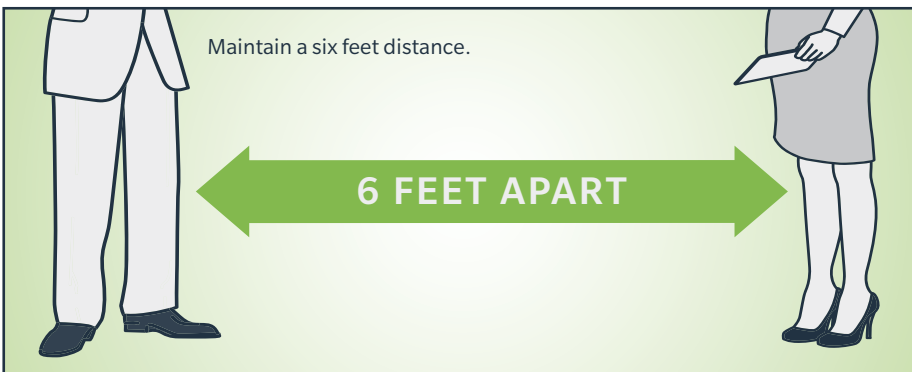
Utilize sanitization wipes as necessary.



If the space is full, wait until a colleague exits to allow for adequate distancing.



Maintain a six feet distance.



Avoid loitering in the space.



Conference Rooms

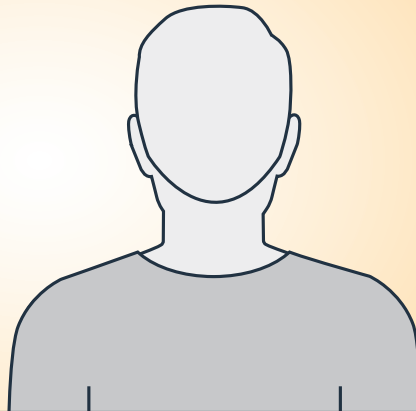
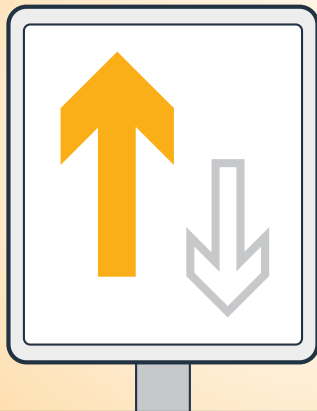
Can this meeting be conducted as a video conference?



Wear a mask over your nose and mouth.



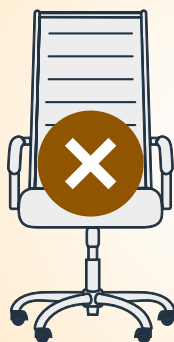
If the space is full, wait until colleagues exit to allow for adequate distancing.



Avoid touching shared equipment by using a paper towel, your elbow, or clean gloves.



Limit the number of meeting attendees to allow everyone enough space to spread out at least six feet from one another.

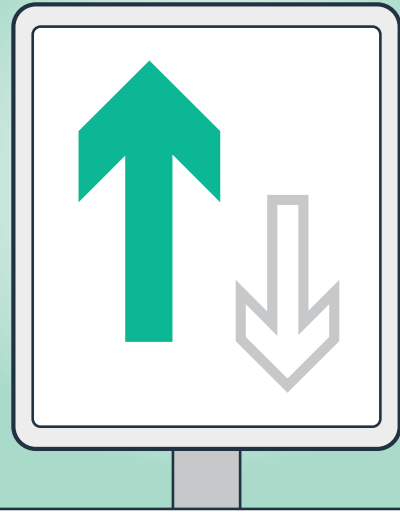


Restroom

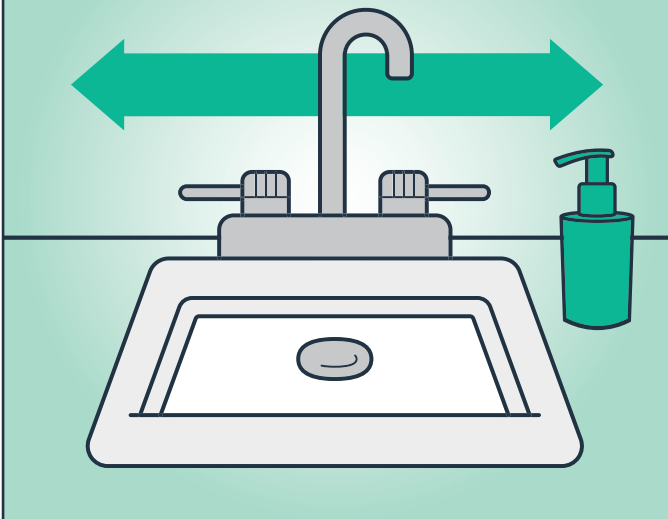
Wear a mask over your nose and mouth.



If one-way traffic isn't possible, allow space for colleagues to enter or exit the restroom before proceeding.



To maintain physical distancing, use alternating sinks to wash your hands.



Wash your hands for at least 20 seconds.

