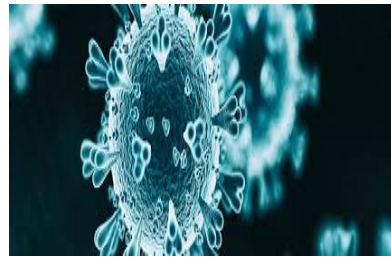


# Tips for Winter Workplace Safety

## MASKS FOR WINTER WORK



### FABRICS

- \* Thicker cotton canvas and heavyweight cotton makes for a warmer option
- \* use wool for winter masks as it is naturally moisture-wicking, breathable, temperature-regulating and odor-resistant
- \* fleece masks are thick, dense and comfortable - help keep your face protected from the wind
- \* knit mask is a soft material and requires a filter insert



What to look for in a winter mask- the tighter the weave. the more effective the fabric with filtration

### STYLES



↙ **A mask that's like a scarf for your face**

↘ **face mask and ear muff hybrid**



↙ **AVOID COLD EAR PAIN: use a mask that ties above the neck and above the head to avoid tying something behind the back of your ears and feeling uncomfortable**

